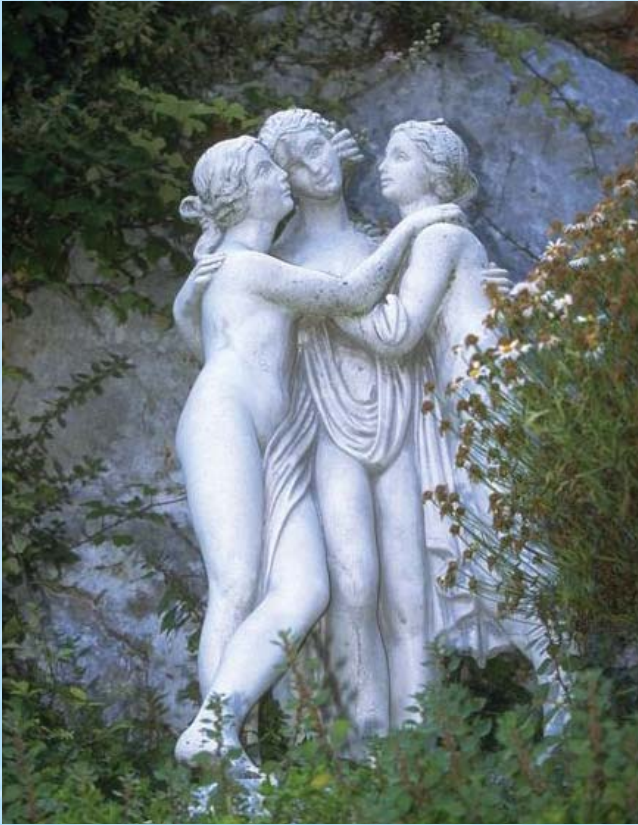


TRADITIONAL  
MEMORIALS  
HAND CARVED  
IN STONE







Down countless centuries the craft of the stonemason has been perfected to bring out and enhance the latent qualities of a wide variety of natural stone.

Over many years, nature then adds a subtle mellowing to superb craftsmanship bringing a timeless beauty and tranquillity to every memorial.

We are pleased, therefore, to introduce a fine selection of superbly hand carved memorials in natural stone and slate. All these memorials will compliment and greatly enhance any churchyard.

Some of the memorials have been photographed whilst wet to help show the natural colour variation in the stone. All stone, even of the same type, displays slightly differing natural markings thereby imparting its own unique character and beauty.

We source our stones from selected quarries across the U.K and Europe. While we strive to keep a continuous supply of the full range of stones, all stone types are subject to availability. A swatch of stone types is shown opposite.

A headstone can be chosen as a lawn headstone with base as shown, or as a headstone erected directly into the ground without the need for a base.

Whilst all design features shown in this brochure are interchangeable, our master stonemasons can always interpret individual requirements and will be happy to discuss any special features you may require.





## Types of stone

The beauty of stone is in it's natural colour and texture and therefore this may vary occasionally from the samples

shown here. The colour reproduction of this brochure is as accurate as the printing process will allow.



Pembroke Beige Limestone



Celtic Limestone



New Nabresina Limestone



Nabresina Light Limestone



Portland Limestone



Marble



Forest of Dean Sandstone



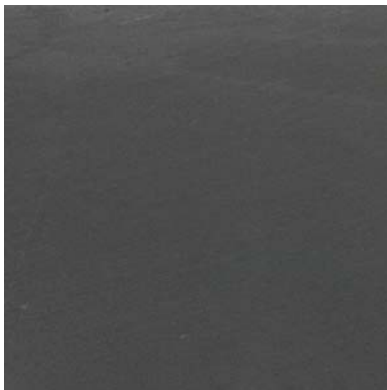
York Sandstone



Cornish Granite



Karin Grey Granite



Blue Black Slate



Green Slate

## LIMESTONE MEMORIALS

A generally buff-coloured sedimentary rock that usually contains tiny fossils, which in time will weather gracefully to compliment the natural environment.



DS1



DS2



DS3



DS4





DS5



DS6



DS7



DS8



DS9





DS10

The carvings shown throughout this brochure represent some of the more popular designs in use today. Alternatively your own ideas are welcomed to create a more personal memorial.



DS11



DS12



DS13



DS14





DS15



DS16



DS17



DS18



DS19



## SLATE MEMORIALS



DS20

Slate is a fine-grained igneous rock made from volcanic ash and available in shades of blue/black and green. Its hard, weather-resistant surface is perfect for carving and lettering.



DS21



DS22



DS23





DS24



DS25



DS26 Detail



DS26

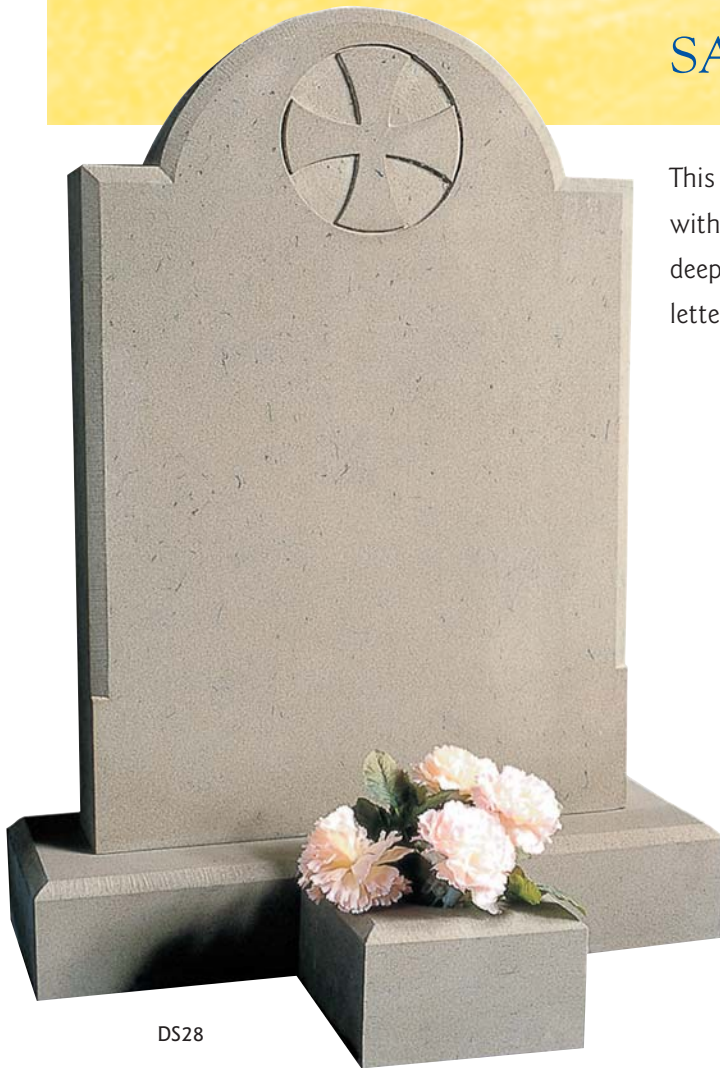


DS27



## SANDSTONE MEMORIALS

This coarse, granular stone has a clean, uniform appearance with a matt finish that cannot be polished. It is ideal for deep relief style carving and clean, unpainted incised lettering.



DS28



DS29



DS30



DS31





DS32



DS33



DS34 Detail



DS34



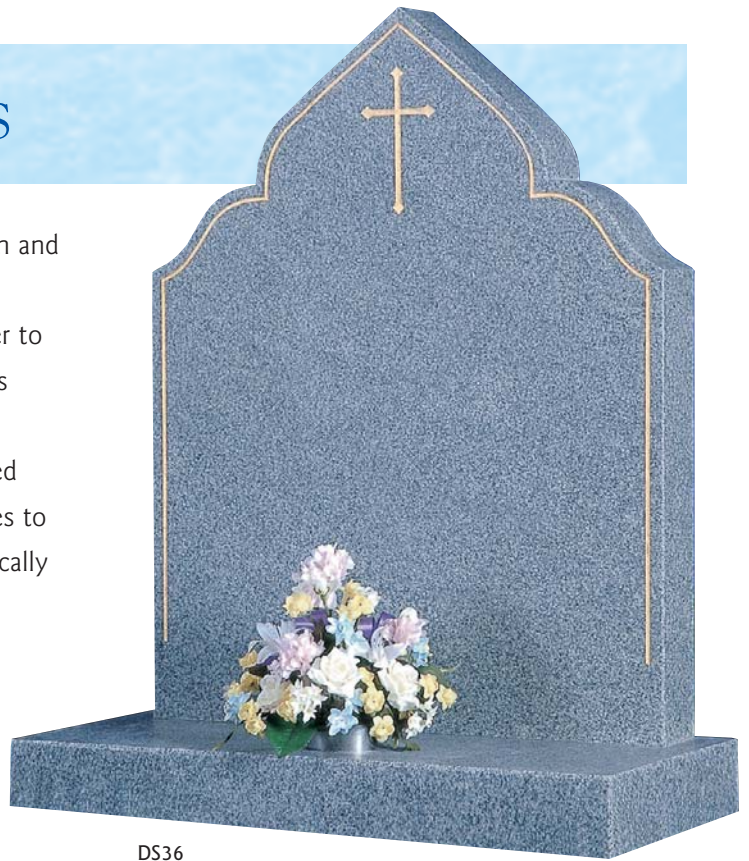
DS35





## GRANITE MEMORIALS

Granite differs to stone as it is extremely smooth and hard in texture and will not weather as quickly. Conversely these durable qualities make it harder to achieve the deeper and intricately carved designs synonymous with the softer stones. Through the skill and expertise of our experienced stonemasons we have overcome these challenges to create a selection of memorials that are aesthetically pleasing and complimentary.



DS36



DS37



DS38



D39



DS40





DS41



DS42



DS43



DS44



DS45





## MARBLE MEMORIALS

Marble has been prized for its use in sculptures since classical times. It is a white metamorphic stone often found with grey and beige veining. The high calcium content gives the stone a soft, almost translucent character.



DS51



DS52



DS53



DS54





DS55



DS56



DS57



DS58



DS59



## VASES AND PLAQUES



DS46

Memorials for cremated remains are every bit as important. Often church regulations do not allow a full-size memorial for cremations, so we can also offer natural stone memorials for this purpose.

The same lettering styles and decorations are available for these memorials, and your memorial mason will be happy to help you choose a design and inscription.



DS48



DS47



DS50



DS49



# LETTERING STYLES & INSCRIPTION TECHNIQUES

## Lettering

This is one of the most important aspects of a memorial and should be discussed in detail with your memorial mason. They should be able to provide you with a sample range of lettering styles and finishes, the choice of which will depend partly on the chosen stone and personal preference. Many masons now provide high quality v-cut machined letters which have a precise and uniformed appearance. Some masons still offer hand-carved letters which are more individual in character. Letters can be painted or left plain, the latter meaning less maintenance in the long-term.

## Lettering styles

These are the most popular lettering styles. The finishes in which they can be produced are cut only, cut and enamelled, cut and gold leaf, cut and leaded.

## Roman Lettering

### ROMAN CAPITALS

#### *Roman Italics*

### *ROMAN CAPITALS ITALIC*

## Block Lettering

### BLOCK CAPITALS

#### *Block Italics*

### *BLOCK CAPITALS ITALIC*

## Old English

### *Commercial Script*

## TRAJAN CAPITALS

## celtic

MATERIAL	CUT ONLY	CUT & ENAMELLED	CUT & GILDED	CUT & LEADED
Purbeck Stone	yes	yes	no	yes
Celtic Stone	yes	yes	yes	no
Nabresina (Light & Dark)	yes	yes	no	yes
Indiana Limestone	yes	yes	no	no
Portland Stone	yes	yes	no	no
York Stone	yes	yes	no	no
Serena Stone	yes	yes	no	no
Cornish & Karin Granite	no	yes	yes	no
Black & Green Slate	yes	yes	yes	no



## Cemetery and churchyard regulations

All memorials are subject to local church regulations which stipulate acceptable stones for each area. All the stones in this brochure should generally conform to these regulations, but this is not guaranteed – your memorial mason will be able to advise you on what the regulations permit in your local area.

## Insurance

We recommend that you insure the memorial against accidental damage, theft and vandalism from the time the memorial is erected.